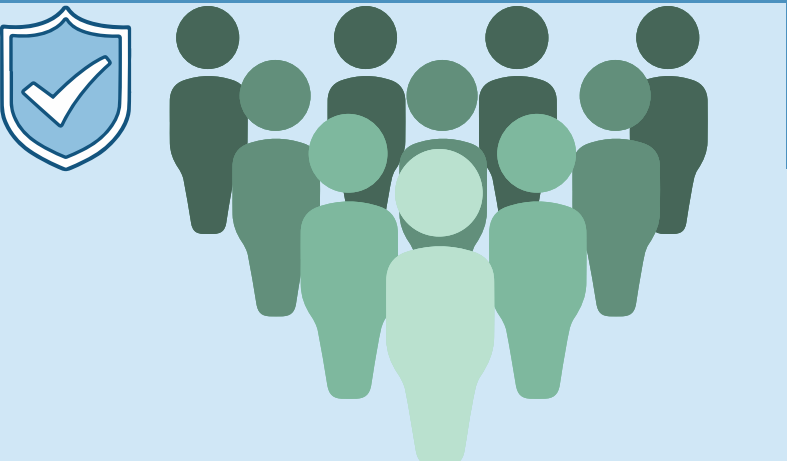


# The Impact of Erasmus+ Programme on Adult Education Sector



**RIA**  
ADULT EDUCATION



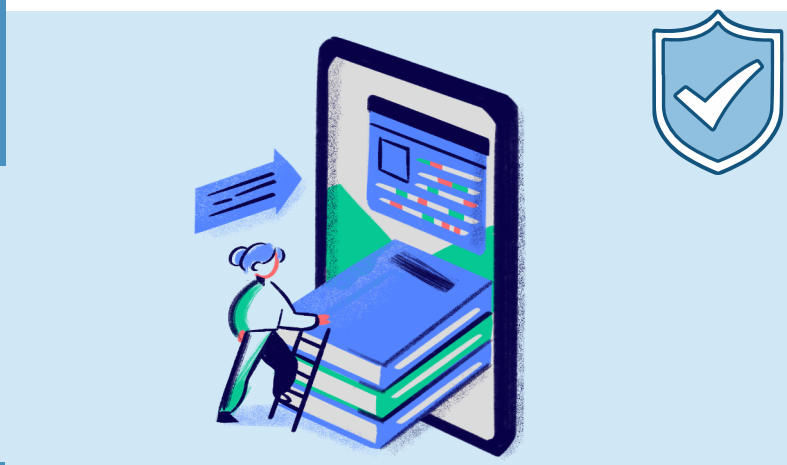
## Participants

Among organisations participated in the Erasmus+ Programme, the common actors included adult education providers schools/institutes/education centres, higher education institutions, local and regional public institutions. The most frequently targeted adult learner groups in Erasmus+ projects were adults with low educational attainment, women, young adults and adults with lacking basic skills with a wider range of adult groups targeted to a lesser extent.

## Main impact

The results indicate that participation in Erasmus+ has resulted in a significant increase in the sector's and industry's staff, in strengthening, providing, diversifying, improving the quality of education and developing themselves individually and professionally.

The programme has shown that while adult learners' self-confidence, social connections, and participation have increased, the reflection in the labour market has been limited. There is no feedback regarding any factors that might have hampered the impact.



## Impact on horizontal priorities

Regarding the impact on horizontal priorities dimension, participation in Erasmus+ Programmes has been seen to trigger improvements across all themes, with these impacts being particularly prominent in the areas of Digital Transformation, Inclusion and Diversity, and Participation in Democratic Life, Common Values and Civic Engagement.

There has been significant ongoing use of outputs and products developed.

## Policy impact on local, regional and national level

The impact of the Erasmus+ Programme on policies is evident through adaptations at both local and regional levels and national levels (governmental and/or sectoral).

The Programme has a more significant impact on policies at the local and regional levels, impact diminishes at the national level.

